

The February 22, 2011 Magnitude 6.3 Earthquake in New Zealand

Alan Taylor - In Focus - The Atlantic

<http://www.theatlantic.com/infocus/2011/02/earthquake-in-new-zealand/100013/>



Debris crushed a car outside the Christchurch Catholic Cathedral after an earthquake rocked Christchurch, New Zealand, Tuesday, Feb. 22, 2011. The 6.3-magnitude quake hit at the height of a busy workday, toppling tall buildings and churches, crushing buses and killing dozens of people in one of the country's worst natural disasters. (AP Photo/NZPA, David Wethely)



Rescue workers climb onto the collapsed Pyne Gould Guinness Building in central Christchurch, New Zealand, Tuesday, Feb. 22, 2011. A powerful earthquake collapsed buildings at the height of a busy workday, killing at least 65 people and trapping dozens in one of the country's worst natural disasters. (AP Photo/New Zealand Herald, Mark Mitchell)



A man looks for any victims amongst rubble in central Christchurch February 22, 2011. (REUTERS/Simon Baker)



Rescuers workers carry the body of a deceased woman on February 22, 2011 in Christchurch, New Zealand. (Martin Hunter/Getty Images)



An injured person is carried by rescue workers after an earthquake rocked Christchurch, New Zealand, Tuesday, Feb. 22, 2011. (AP Photo/NZPA, David Wethely)



A car is crushed by a beam in central Christchurch, New Zealand, Tuesday, Feb. 22, 2011. (AP Photo/New Zealand Herald, Mark Mitchell)



A collapsed building is barricaded following an earthquake in Christchurch, New Zealand, Tuesday, Feb. 22, 2011. (AP Photo/New Zealand Herald)



Several of the icebergs that caved into Tasman Lake are seen from the air after a 6.3 earthquake in Christchurch, New Zealand, Tuesday, February 22, 2011. (AP Photo/NZPA, Denis Callesen)



A group of people travel with Glacier Explorers to see one of the many icebergs that caved into Tasman Lake as a result of the 6.3 earthquake in Christchurch, New Zealand, Tuesday, February 22, 2011. (AP Photo/NZPA, Denis Callesen)



An iconic Christchurch tram is covered in debris on February 22, 2011 in Christchurch, New Zealand. (Martin Hunter/Getty Images)



Rescuers search for survivors in a collapsed building in Manchester Street on February 22, 2011 in Christchurch, New Zealand. (Martin Hunter/Getty Images)



Rescue crews look for staff in the damaged Pyne Gould Guinness building in central Christchurch February 22, 2011. (REUTERS/Simon Baker)



A man dies on the street with his wife holding his hand after an earthquake in Christchurch, February 22, 2011. (REUTERS/Christchurch Press/Richard Cosgrove)



A view shows a damaged cathedral after an earthquake in central Christchurch February 22, 2011. (REUTERS/Don Scott/Christchurch Press)



A man holds a child in his arms after an earthquake in Christchurch February 22, 2011. (REUTERS/Christchurch Press/Iain McGregor)



In this photo released by China's Xinhua News Agency, people walk through a street partly covered with rubble after an earthquake hit Christchurch, New Zealand, Tuesday, Feb. 22, 2011. (AP Photo/Xinhua, Pu Rui)



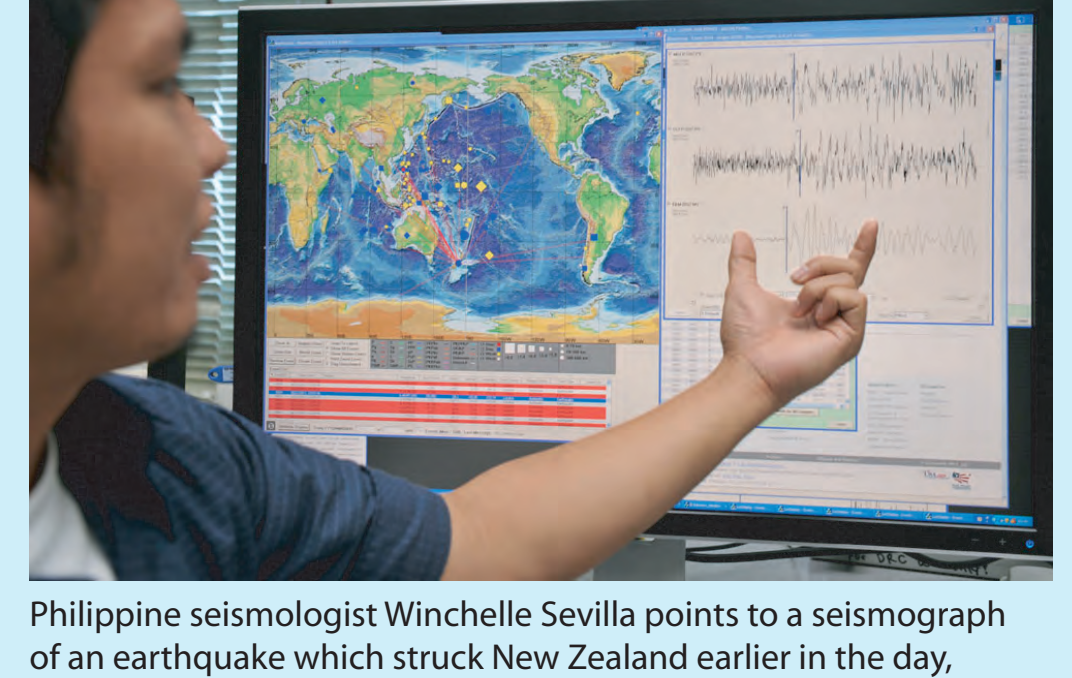
Locals stand in a park cordoned off by police, away from dangerous and unsafe areas of Christchurch central business district, New Zealand after a 6.3 earthquake hit Tuesday, Feb. 22, 2011. (AP Photo/Samuel Sutherland)



A man lies injured on Manchester street on February 22, 2011 in Christchurch, New Zealand. (Martin Hunter/Getty Images)



People have broken windows to prepare to be rescued from a high-rise building in central Christchurch, New Zealand, Tuesday, Feb. 22, 2011. (AP Photo/New Zealand Herald)



Philippine seismologist Winchelle Sevilla points to a seismograph of an earthquake which struck New Zealand earlier in the day during a press briefing at the Philippine volcanology office in Manila on February 22, 2011. At least 65 people died in the 6.3 magnitude earthquake that hit the New Zealand town of Christchurch Prime Minister John Key said. (TED ALJIBE/AFP/Getty Images)



Fifteen-year-old Kent Manning, left, and his sister Libby, 18, react with their father, who asked not to be identified, after they were told by police that there was no hope of finding Kent and Libby's mother alive in a collapsed building following a 6.3-magnitude earthquake Tuesday in Christchurch, New Zealand, Wednesday, Feb. 23, 2011. (AP Photo/Rob Griffith)



Rescue workers search for victims after an earthquake rocked Christchurch, New Zealand, Tuesday, Feb. 22, 2011. (AP Photo/NZPA, David Wethely)



Collapsed buildings in Manchester Street on February 22, 2011 in Christchurch, New Zealand. (Martin Hunter/Getty Images)



A man is rushed to hospital after being rescued from a collapsed building in Manchester Street on February 22, 2011 in Christchurch, New Zealand. (Martin Hunter/Getty Images)



Street scene near a destroyed cathedral in Christchurch, New Zealand on February 22nd, 2011. (© Asher Trafford)



Rescue workers block off a collapsed building in central Christchurch, New Zealand, Tuesday, Feb. 22, 2011. (AP Photo/New Zealand Herald, Mark Mitchell)



A general view shows a damaged building after an earthquake in Christchurch February 22, 2011. (REUTERS/Jason Tweedie)



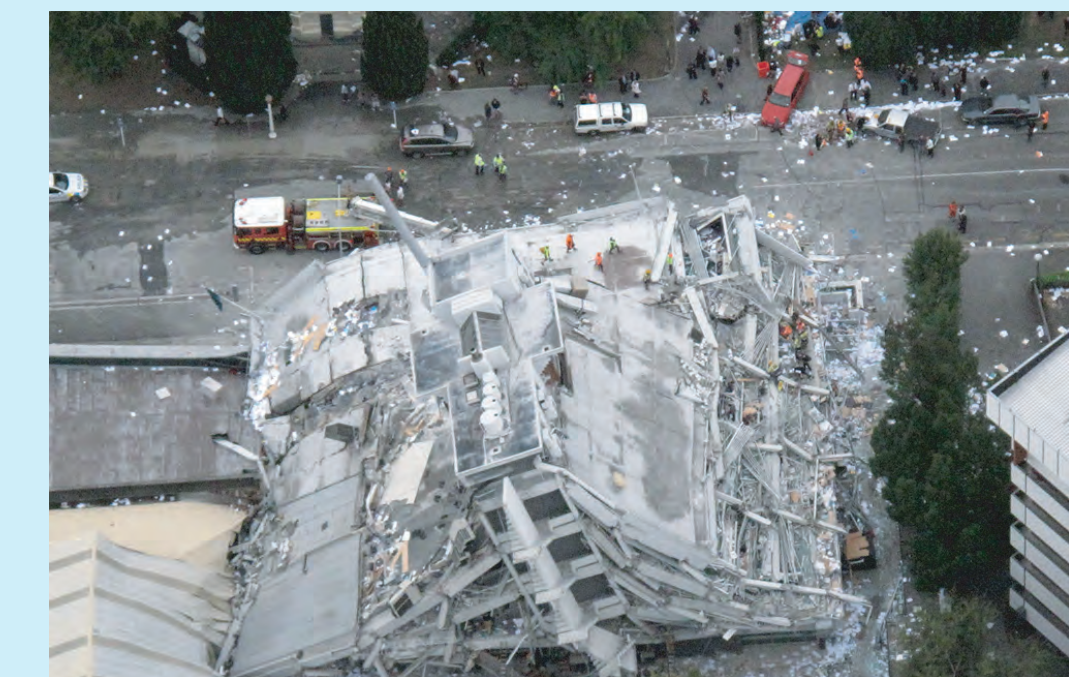
People walk past rubble as they evacuate after an earthquake in Christchurch, New Zealand, in this February 22, 2011 image taken from video footage. (REUTERS/TV3 via Reuters)



People are evacuated from a damaged building after an earthquake in Christchurch, New Zealand, in this February 22, 2011 image taken from video footage. (REUTERS/TV3 via Reuters)



Two women hug each other in front of a collapsed building in central Christchurch February 22, 2011. (REUTERS/Christchurch Press/John Kirk-Anderson)



The four-story Pyne Gould Corporation building lies in ruin in central Christchurch February 22, 2011. (REUTERS/Christchurch Press/Don Scott)



A destroyed Baptist church is seen after an earthquake in central Christchurch February 22, 2011. (REUTERS/Simon Baker/RELIGION)



The ground floor of a structure leans perilously, damaged by the earthquake centered near Christchurch, New Zealand on February 22nd, 2011. (© Asher Trafford)



A man is seen after being pulled from the rubble after an earthquake in Christchurch February 22, 2011. (REUTERS/Christchurch Press/Iain McGregor)



A policeman talks to a woman trapped in a collapsed cathedral after an earthquake in Christchurch February 22, 2011. (REUTERS/Christchurch Press/Richard Cosgrove)



Emergency services search the rubble for survivors of the collapsed CTV building in Christchurch's business district, Tuesday, Feb. 22, 2011. Search teams using dogs, heavy cranes and earth movers worked through dawn Wednesday in one of New Zealand's largest cities, trying frantically to find survivors amid the crumbled concrete, twisted metal and huge mounds of brick left by a powerful earthquake. (AP Photo/New Zealand Herald, Brett Phibbs)



A rescue dog stands between Taiwanese earthquake rescue workers before their flight out of Taoyuan, northern Taiwan, February 22, 2011, to Christchurch, New Zealand via Sydney, Australia. New Zealand rescue teams worked under search lights early Wednesday to find scores of people trapped under collapsed buildings after an earthquake struck the country's second-biggest city of Christchurch, killing at least 65 people. (REUTERS/Nicky Loh)



Emergency services team members search for survivors in the rubble of the collapsed CTV building in Christchurch's business district on Tuesday, Feb. 22, 2011. (AP Photo/New Zealand Herald, Brett Phibbs)



Liquefaction on Kilmore St, Christchurch, New Zealand on February 22nd, 2011. Liquefaction can occur during strong shaking where soil loosens and groundwater migrates to the surface under pressure. (© Asher Trafford)



Rescue workers use thermal cameras to search for survivors in Christchurch, New Zealand, Wednesday, Feb. 23, 2011, after the city was hit by a 6.3 earthquake Tuesday, Feb. 22. (AP Photo/Rob Griffith)



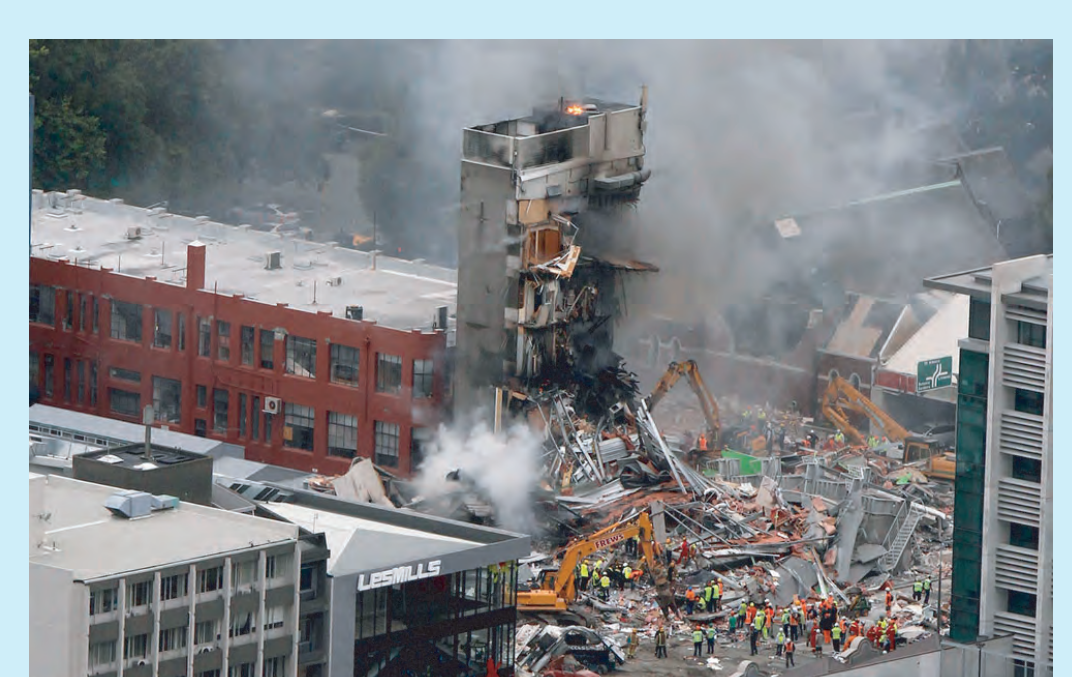
People look at badly fractured pavement after the earthquake in New Zealand on February 22nd, 2011. (© Asher Trafford)



A building in Christchurch, New Zealand, is destroyed after an earthquake struck Tuesday, Feb. 22, 2011. (AP Photo/NZPA, Pam Johnson)



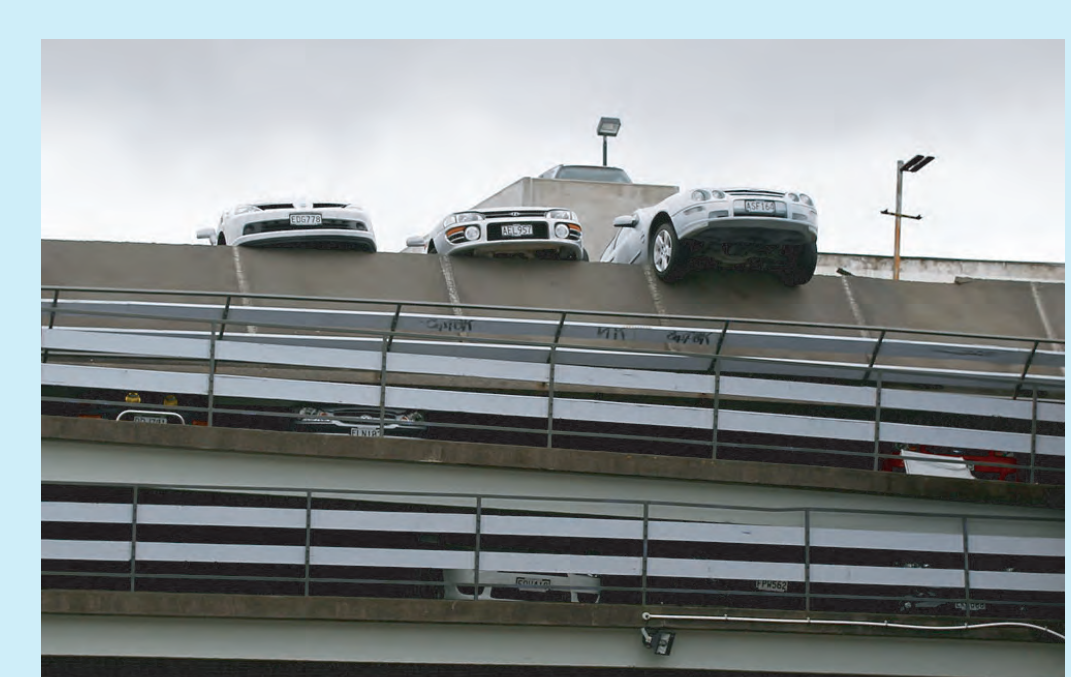
The Christchurch, New Zealand, suburb of Bexley is flooded following an earthquake, Tuesday, Feb. 22, 2011. (AP Photo/New Zealand Herald, Mark Mitchell)



Rescue workers work to extinguish a fire at a collapsed building of King's Education in central Christchurch, New Zealand, Tuesday, Feb. 22, 2011. (AP Photo/New Zealand Herald, Mark Mitchell)



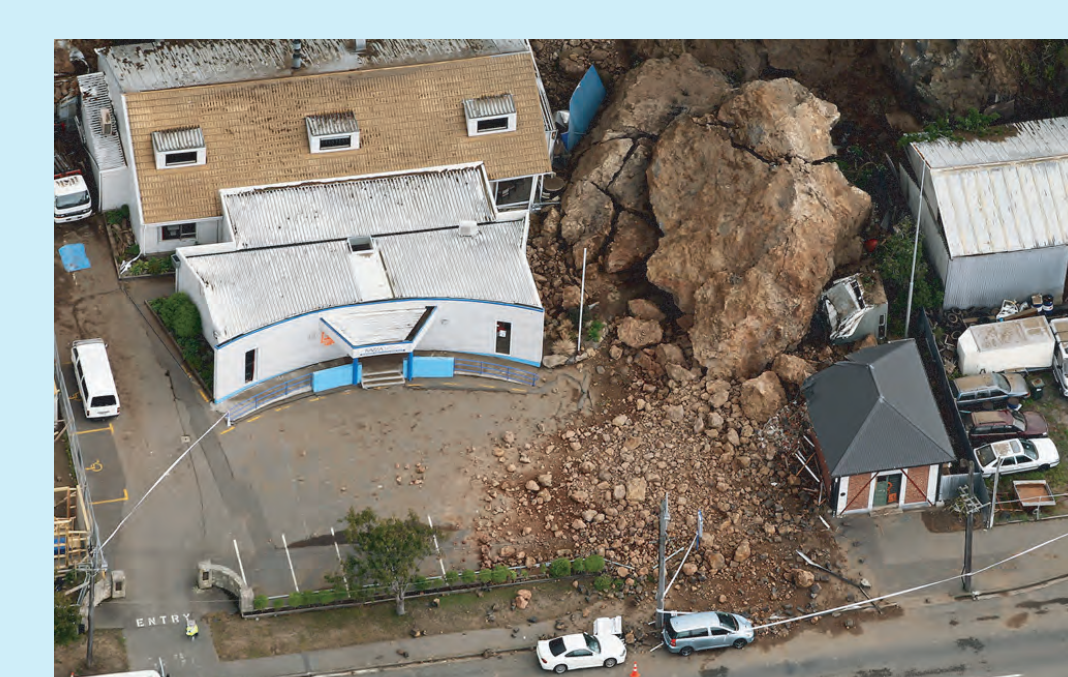
Cars are abandoned on a flooded street after a strong earthquake in suburban Christchurch, New Zealand, Tuesday, Feb. 22, 2011. (AP Photo/New Zealand Herald, Mark Mitchell)



Crushed cars are seen in a car parking building on February 22, 2011 in Christchurch, New Zealand. (Martin Hunter/Getty Images)



Bodies are covered after an earthquake rocked Christchurch, New Zealand, Tuesday, Feb. 22, 2011. (AP Photo/NZPA, David Wethely)



Giant boulders and landslides crushed buildings in Sumner on February 23, 2011 in Christchurch, New Zealand. (Hannah Johnston/Getty Images)



A young man stands inside an earthquake-caused crack in a New Zealand street on February 22nd, 2011. (© Asher Trafford)



A young man jumps his bike on part of an earthquake-damaged bridge in Christchurch, New Zealand on February 22nd, 2011. (© Asher Trafford)



New Zealand Army vehicles patrol the streets on February 23, 2011 in Christchurch, New Zealand. (Martin Hunter/Getty Images)



A BP truck is shown stopped by the earthquake on the road to Lyttelton on February 23, 2011 in Christchurch, New Zealand. (Hannah Johnston/Getty Images)



A large landslide lands on a house in Sumner on February 23, 2011 in Christchurch, New Zealand. (Martin Hunter/Getty Images)



The Timeball Station is seen to be badly damaged, a day after the 6.3-magnitude earthquake in the township of Lyttelton near Christchurch, New Zealand, Wednesday, Feb. 23, 2011. (AP Photo/New Zealand Herald, Sarah Ivey)