

CHAPTER VII

THE LOYOLA UNIVERSITY SEISMOLOGICAL STATION

CHICAGO, ILLINOIS

By Alphonse R. Schmitt, S. J.

The Loyola University Seismological Station was inaugurated in 1912. Its first director was Reverend Thomas A. Kelly, S. J., Professor of Physics and Mathematics. The 80 kilogram Wiechert horizontal seismograph was first set up at the beginning of September, 1912, and it recorded the first earthquake on the 29th of the same month. In its issue of October 1 the Chicago Tribune featured this as the first earthquake recording ever made in Chicago and it printed pictures of Father Kelly and of the record surrounded by several small cartoons humorously suggesting some local causes of the tremor. The seismograph was installed in a ground floor vault in the Michael Cudahy Science Hall where provision had been made for it when the building was erected in 1910-1911. Because of building vibrations this location would now be unsuitable for the more sensitive instruments which have since been developed. Owing solely to lack of funds the Loyola station has to date not found it possible to install modern instruments but is still operating with only its original Wiechert horizontal as a perennial nest egg.



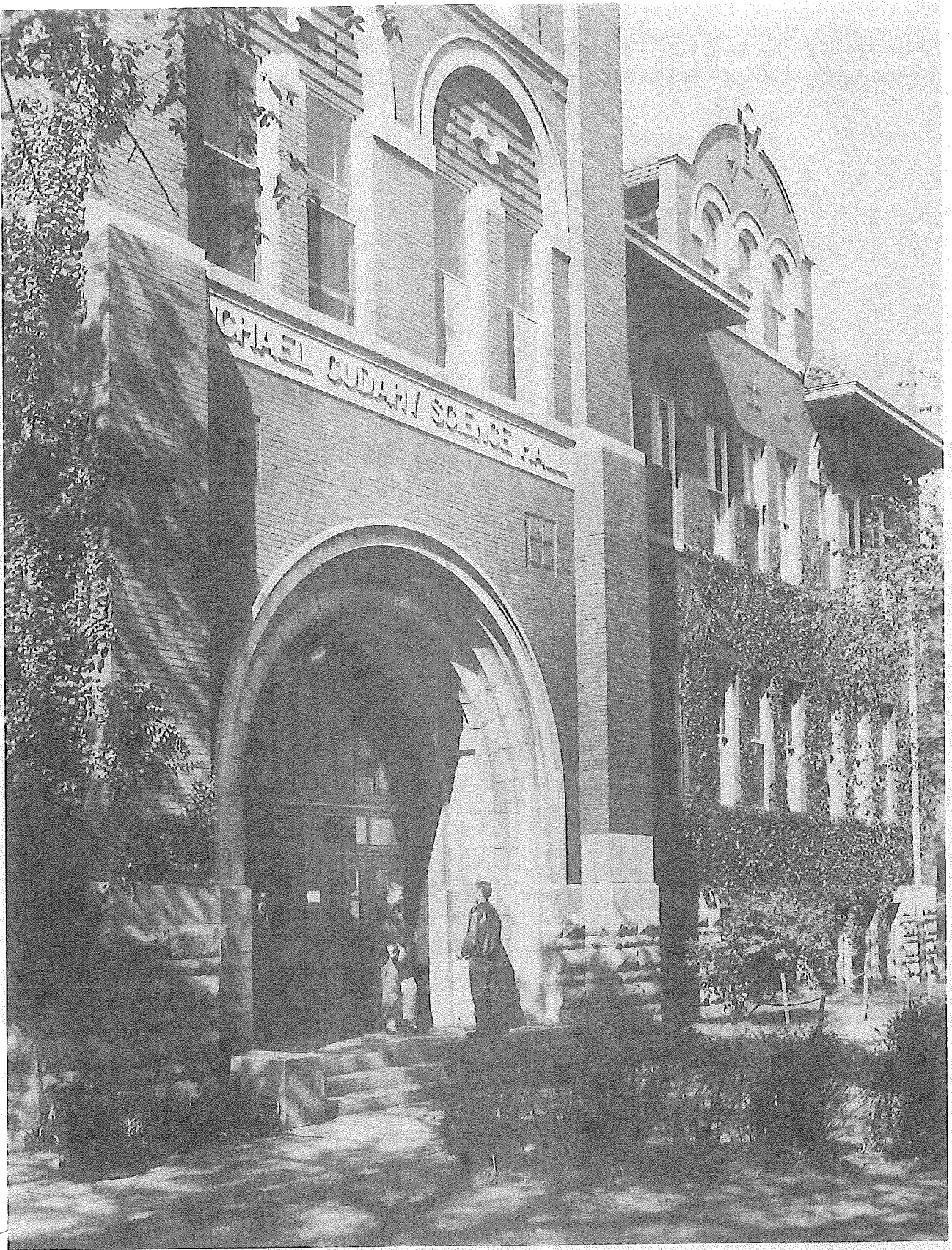
Reverend Thomas A. Kelly, S. J.
Director, 1912 - 1916



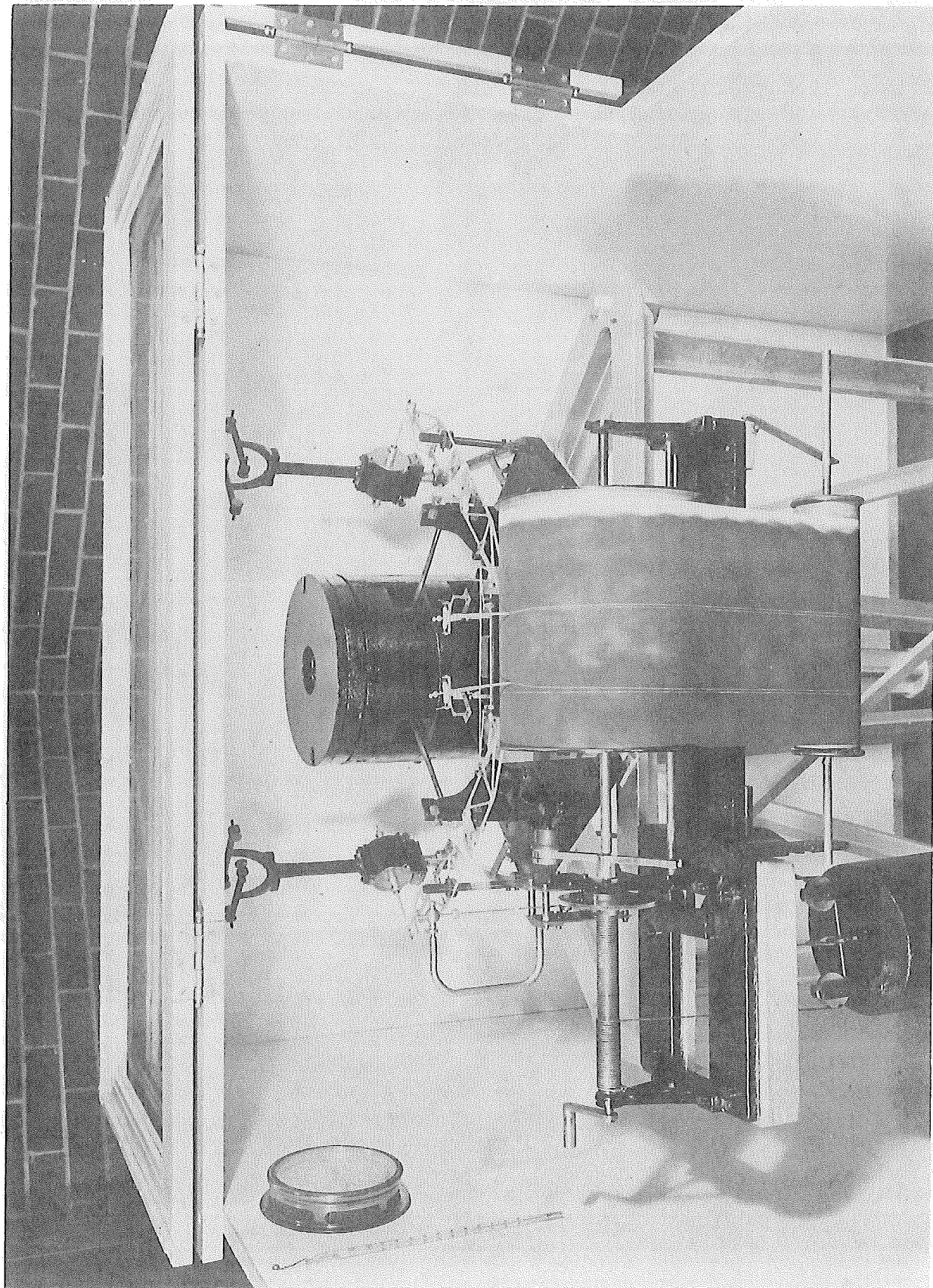
Reverend George J. Brunner, S. J.
Director, 1926 - 1931



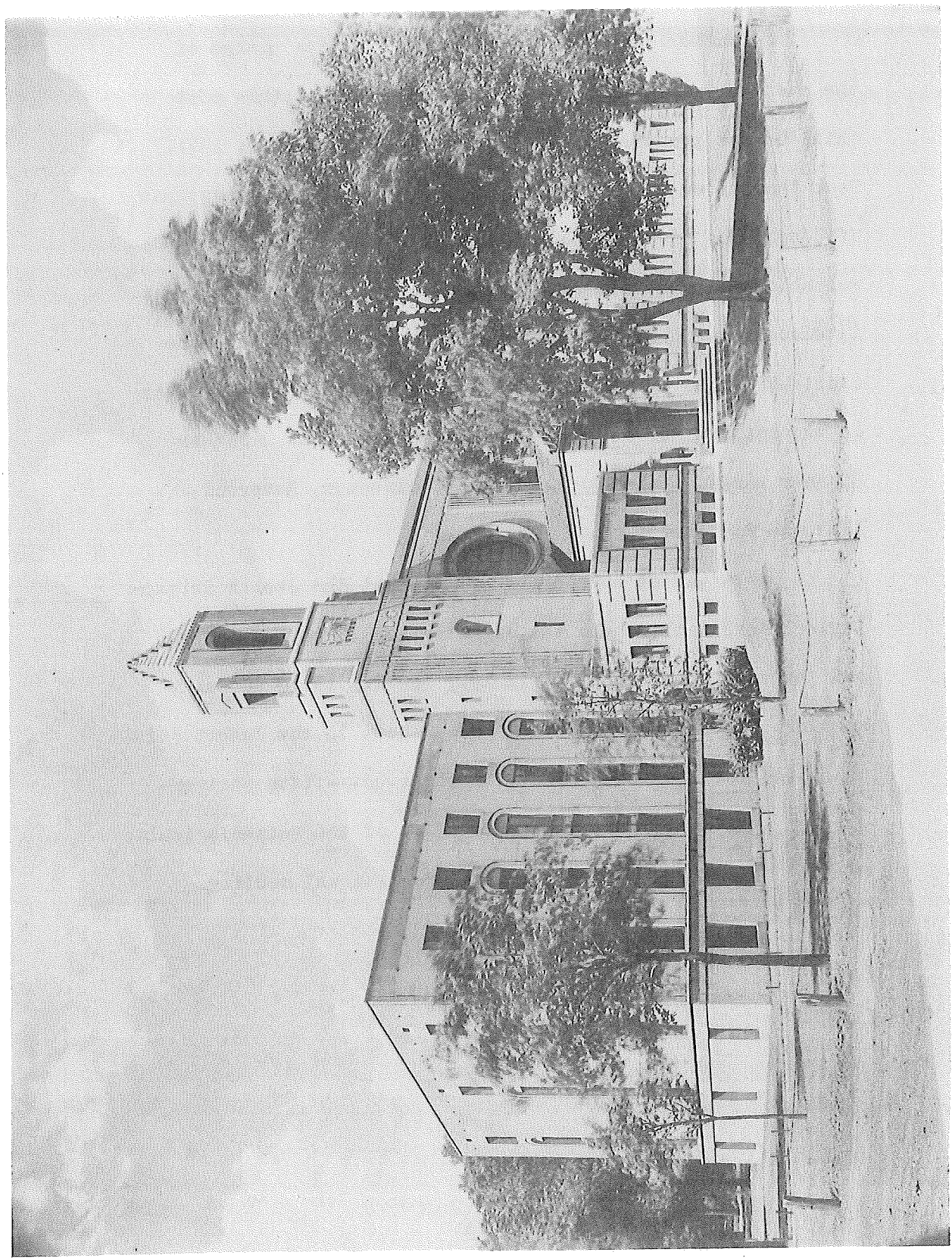
Reverend Alphonse R. Schmitt, S. J., Director, 1931 to the Present



Michael Cudahy Science Hall - The station is located at the south end of the ground floor.



Wiechert 80 Kg. Horizontal Component Seismograph before Installation of the Electric Drive



Cudahy Library at Loyola University, Chicago, Illinois

Father George J. Brunner, S. J., took charge of the station in September, 1926, and remained at this post until he was transferred to Florissant in September, 1931. Soon thereafter he was placed on the staff of the Department of Geophysics of Saint Louis University where, among many valuable contributions to the science of seismology, he developed and published his well known Depth-Time-Distance Chart which has proved to be such a big aid to seismologists in the analysis of deep-focus earthquake records. Father Brunner was succeeded by the present director, Reverend Alphonse R. Schmitt, S. J.

It was at Loyola University that the Jesuit Seismological Association held its organizational meeting in 1925 and the same group returned in 1927 for its third annual meeting. This year, 1950, Loyola was host to the Jesuit seismologists for the observance of their twenty-fifth anniversary as well as to the Eastern Section of the Seismological Society of America for its twenty-second annual meeting.