

## CHAPTER III

### THE JESUIT SEISMOLOGICAL ASSOCIATION

By James B. Macelwane, S. J.

The organization meeting took place as scheduled at Loyola University in Chicago August 24. It was called to order by the President of the University, Reverend William H. Agnew, S. J. The President of Loyola University of the South, the Reverend Florence D. Sullivan, S. J., was elected Chairman and Father Macelwane was elected Secretary. Father Sullivan called upon Father Macelwane to give an account of the circumstances that had led to the call of the meeting by the four Fathers Provincial. This he did by presenting a brief resume of a paper he had read at a meeting of the Physics Section of the American Association of Jesuit Scientists entitled, "Our Great Opportunity in Seismometric Research". He outlined the present state of the science of seismology and the strategic position we occupied at the moment if we used our facilities in an organized effort. He also related the incidents connected with the visits that had been paid to him in Berkeley in regard to this matter by the seismologists of the Carnegie Institution of Washington and especially by Doctor Arthur L. Day.

Father Sullivan spoke of the great advantages we already have in our chain of seismological stations and of how very much these would be increased by the proposed organization. He then asked several of those present to outline what they thought should be undertaken by a central station. Their ideas, advanced in some detail, were: (1) A research center where scientific work of the first order could be accomplished; where directors of stations and other seismologists might find facilities for the solution of their own problems not available at home, and where, through connection with a graduate school, younger men might be prepared for work in this field. (2) An administrative central station which would serve as a clearing house for information; where data would be gathered, collated, and distributed to the stations as soon as possible after each earthquake; where the other stations could look for scientific assistance to any extent they desired; and which would serve as a medium of communication with outside organizations.

One of the delegates of the Maryland-New York Province, Mr. John S. O'Connor, S. J., moved that in as much as a research center had already been established at Saint Louis University by the creation of the new Department of Geophysics there, the Jesuit Seismological Association cooperate with it in place of establishing any other center-- at least for the present. This motion was carried.

Father James B. Henry, S. J., delegate of the California Province, moved that whereas the administrative work of a central station could be done most scientifically and satisfactorily by a research personnel, also the administrative central station of the Association be established at Saint Louis under the direction of Father Macelwane. This motion was carried.

It was decided that the name of the new organization should be the Jesuit Seismological Association; that the member stations were to retain their present autonomy and that there should be no limitation to the freedom of any station to make such use of its data as the local authorities desired; that the central station use its discretion in giving information to the press of the country and in the publication of results but that such information be always accredited to its proper source, either to the Association as a whole or to any individual station which furnished it according to priority; and that research at each of the stations should be encouraged to the utmost.

It was decided that minutes of the meeting be sent to the Fathers Provincial and to the General of the Society of Jesus for approval, and that in the course of the following months a constitution based on these minutes be drawn up and submitted by correspondence, which, if approved, would be put in effect at the next annual meeting.

The Constitution as drawn up and approved by the Fathers Provincial and by the Very Reverend Father General,

Wlodimir Ledochowski, and accepted by the Association is the following:

#### ARTICLE I

##### Name

The name of this organization of Jesuit seismological stations or observatories shall be the Jesuit Seismological Association.

#### ARTICLE II

##### Object

The object of this Association is to foster cooperation among Jesuit institutions of the American Assistancy toward an organized Jesuit contribution to the science of seismology.

#### ARTICLE III

##### Membership

In order to insure a united effort all the Jesuit seismological stations in the American Assistancy are to maintain active membership in the Jesuit Seismological Association. This membership is in no wise to be construed as limiting the autonomy of the individual stations or their use of their own data in accordance with the wishes of local superiors.

#### ARTICLE IV

##### Officers

The officers of the Jesuit Seismological Association shall be a President, a Secretary-Treasurer, and a Director of the Central Station.

#### ARTICLE V

##### Annual Meeting

The ordinary business of the Association is to be conducted by the officers of the Association. They are to be chosen by majority vote at a meeting of the Directors of all the member stations which is to be held annually at a place chosen with the approval of the Fathers Provincial. This meeting will receive reports of the officers of the Association and of the member stations, discuss the business of the Association, and deliberate concerning the best means of promoting the

scientific work of the Central Station and of the member stations and of cooperating in seismological research during the ensuing year. The minutes of the annual meeting shall be submitted to the Fathers Provincial of the American Assistancy for approval.

#### ARTICLE VI

##### Central Station

A Central Station under the supervision of a Director is to be maintained by the Association. This Central Station is to be both a research and administrative center. It is to assemble and interpret the available data on each important earthquake, make a tentative determination of the epicenter and other pertinent characteristics, and publish a Preliminary Bulletin to be distributed to the member stations and to other institutions throughout the world so as to assist the member stations in the interpretation of their seismograms for their own bulletins and to win esteem for our seismological work. Unless otherwise determined in the future the Central Station is to be located in Saint Louis in cooperation with the Department of Geophysics of Saint Louis University.

#### ARTICLE VII

##### Director

The Director of the Central Station is to visit all the member stations each year so as to be familiar with their working conditions and to help them in every way possible.

#### ARTICLE VIII

##### Finances

The work of the Central Station is to be financed as follows:

Section 1. Saint Louis University volunteers to support the Director of the Central Station while it is located in Saint Louis and to contribute free of charge the necessary laboratory and library space and part of the time of the teaching staff of the Department of Geophysics.

Section 2. The stationery and other supplies, postage and student and clerical assistance are to be furnished by the Association, to cover the cost of which each member station is to pay to the Association annual dues of one hundred dollars (\$100.00).

Section 3. Any special expense incurred or work done for an individual station is to be paid for by that station in addition to its dues.

Annual meetings were held in Chicago at Loyola University in 1926, 1927, and the Jubilee Meeting in 1950. Annual meetings were held at Georgetown University in 1939, 1941 and 1944. At Fordham University, New York, meetings were held in 1934, 1936 and 1946. At Santa Clara meetings were held in 1928 and 1947. At Xavier University in Cincinnati, meetings were held in 1933 and 1940. At Boston and Weston meetings were held in 1938 and 1949. At Saint Louis University meetings were held in 1929, 1931, 1935, 1937, 1942 and 1945. In 1948 the annual meeting was held at John Carroll University in Cleveland.

One of the first and most fruitful acts of the Jesuit Seismological Association was the conclusion of an agreement between the Association, Science Service and the United States Coast and Geodetic Survey, whereby Science Service would finance telegraphic reports of earthquake data from a selected network of stations, chosen from members of the Jesuit Seismological Association, the stations of the United States Coast and Geodetic Survey and others. Telegrams giving, in a special Science Service code, important data on each large earthquake were to be sent to the office of Science Service in Washington, D. C. Stations west of the Mississippi would send a telegram, financed by Science Service, also to the Central Station in Saint Louis. The data from stations east of the Mississippi River were to be relayed by telegram from Science Service to

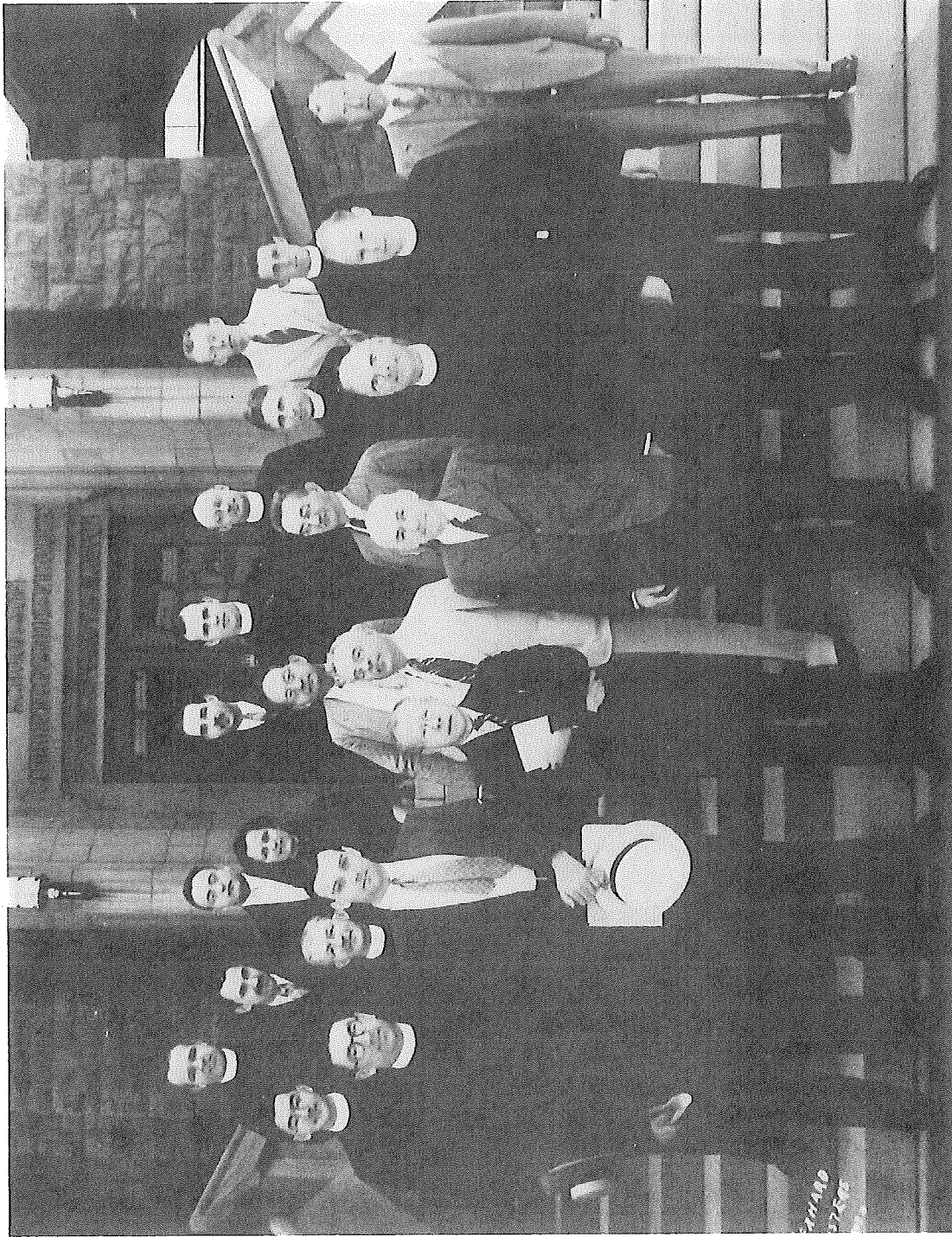
the Central Station. The Central Station of the Jesuit Seismological Association in Saint Louis would then determine the location of the epicenter of the earthquake and would telegraph the result as soon as possible to Science Service. Science Service reserved only the news value of this determination so that the epicenter could not be divulged by the Central Station to the local press or to the press associations while it was news. On the other hand, as soon as the news value of the determination was passed, the Central Station was free to use the accumulated data in any way it saw fit; and it actually was used to publish a Preliminary Bulletin which was mimeographed and circulated to a large number of institutions and seismologists in all parts of the world. A summary of these determinations has usually been published each year in the Transactions of the American Geophysical Union under the title, "Report of the Jesuit Seismological Association."

This Preliminary Bulletin is esteemed very highly. It is certainly consoling to read, in published articles and official bulletins, the epicenters accredited to the Jesuit Seismological Association, issued even by countries such as Switzerland and Norway which will not permit Jesuits within their borders. Jesuits, but not Jesuit science, are officially excluded from Norway by Article II of its Constitution.

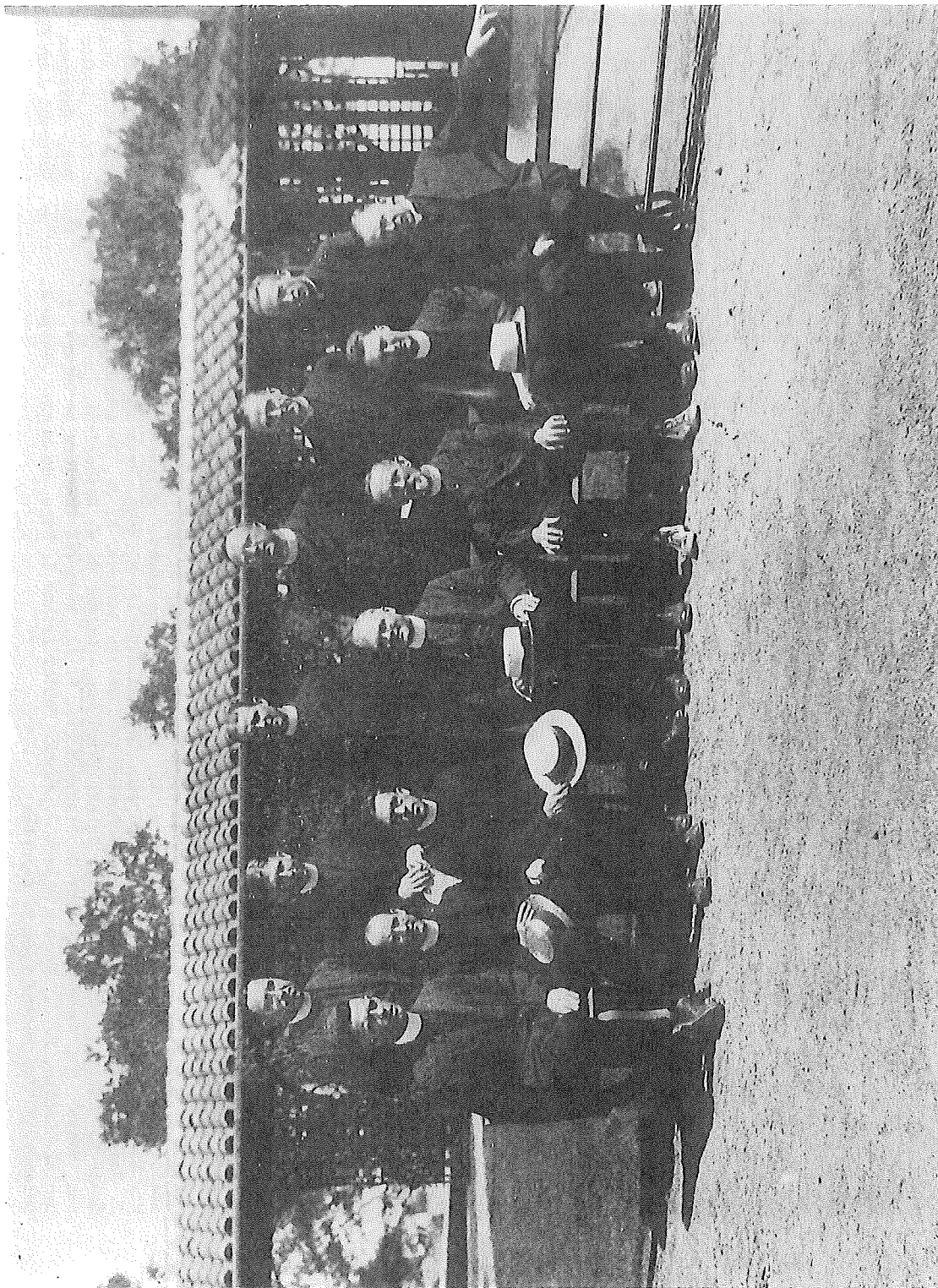


Meeting of the Eastern Section of the Seismological Society of America, Fordham University, held jointly with the Jesuit Seismological Association (many members not present for the picture). Left to right: First row - unknown, Doctor Kirtley F. Mather, Reverend James B. Macelwane, S. J., Captain Nicholas Hunter Heck, Doctor Arthur Keith, Mister Noel H. Osilvie; Second row - Doctor L. Don Leet, Mister Arthur J. Weed, Reverend John W. Tynan, S. J., Doctor Frank Wenner, Reverend Joseph S. Joliat, S. J., Doctor Arthur I. Day, Doctor Charles P. Berkeley, Doctor E. C. Jacobs, Reverend J. Joseph Lynch, S. J.





Meeting of the Eastern Section of the Seismological Society of America, held jointly with the Jesuit Seismological Association, St. Louis University, June 12, 1937. Left to right: First row - Reverend Anthony J. Westland, S. J., Mr. Archie Blake, Doctor Ernest A. Hodgson, Captain Nicholas H. Heck, Reverend James B. Macelwane, S. J., Reverend J. Joseph Lynch, S. J.; Second row - Reverend J. Emilio Ramirez, S. J.; Reverend Alphonse R. Schmitt, S. J., Doctor Louis B. Slichter, Mister Alton C. Chick; Third row - Mister H. M. Rutherford, Doctor Florence Robertson, Doctor Paul Weaver, ? , Reverend Victor C. Stechschulte, S. J., Reverend Theodore A. Zegers, S. J.; Last Row - Reverend Daniel Linehan, S. J., Doctor Albert J. Frank, Doctor Arthur C. Ruge, Monsignor Joseph A. Murray, Reverend John P. Delaney, S. J., Doctor Ross R. Heinrich



Meeting of the Jesuit Seismological Association at the University of Santa Clara, 1928. Left to right:  
First row - Reverend John W. Tynan, S. J., Reverend Orié L. Abell, S. J., Reverend Vincent J. Herr, S. J.,  
Reverend James B. Macelwane, S. J., Reverend Frederick L. Odenbach, S. J., Reverend John S. O'Connor, S. J.,  
Reverend Cornelius J. McCoy, S. J.; Second row - Reverend James B. Henry, S. J., Reverend Victor C.  
Stechschulte, S. J., Reverend Joseph S. Joliat, S. J., Reverend George J. Brunner, S. J., Reverend James I.  
Shannon, S. J., Reverend T. Emmet Reynolds, S. J.





Meeting of the Jesuit Seismological Association, University of Santa Clara, 1948. Left to right:  
First row - Reverend George J. Brunner, S. J., Reverend Joseph Vincent Downey, S. J., Reverend  
William C. Gianera, S. J., Reverend James B. Macelwane, S. J., Reverend Victor C. Stechschulte, S. J.,  
Reverend Victor J. Blum, S. J., Reverend Louis S. Eisele, S. J.; Second row - Reverend Anthony J.  
Westland, S. J., Reverend Edward R. Powers, S. J., Mister William M. Bates, S. J., Reverend John A.  
Weber, S. J., Reverend Karl J. Maring, S. J., Doctor Ross R. Heinrich, Reverend J. Joseph Lynch, S. J.,  
Reverend Henry F. Birkenhauer, S. J.